

# Hazard Tree Study



Pacific Crest National Scenic Trail  
Warm Springs Indian Reservation  
July, 2011

# Scenario

- During the winter of 2010-2011, high winds caused two trees to uproot and fall across the Pacific Crest Trail.
- On their way down, they collided with the crown of a third tree, just a few feet from the trail, causing its trunk to shatter vertically and the tree to lean over the trail.
- The third tree did not fall because its crown became entangled in the crowns of two trees on the other side of the trail.

# Proximity of trees to trail



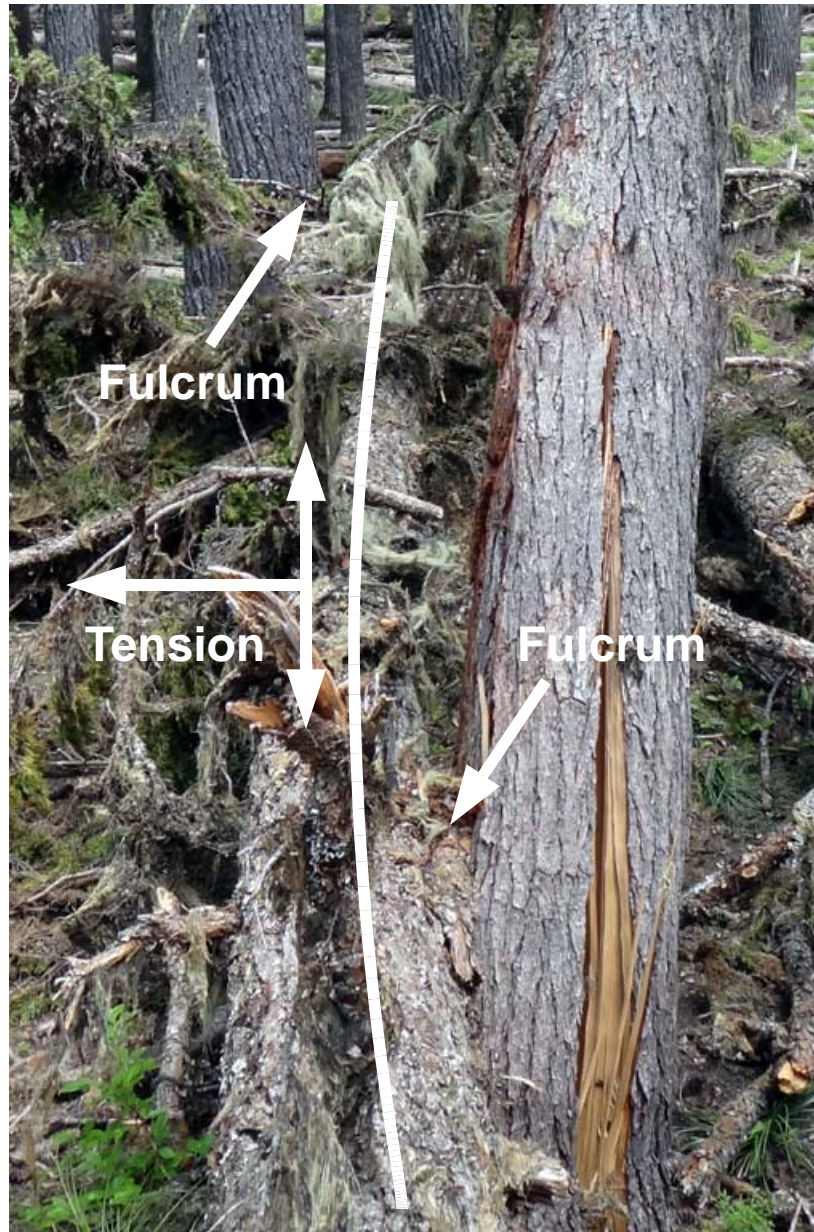
# Condition of leaner



# Side Bind

- Because the northernmost blowdown was wedged between the leaner and a sound tree on the other side of the trail, it developed a severe side bind.
- This tree had approximately 6 feet of horizontal bend over a distance of 50 feet.

# Side bind



# Go/No-Go

- Using established Go/No-Go criteria, the initial volunteer saw crew decided this situation was beyond their capability.
- The crew clearly marked the hazard area and reported the situation to the USFS, the agency managing this section of the PTC.

# Marked Hazard Area





# Two weeks later

- A second crew of volunteers + a USFS recreation manager returned to site.
- Decision was made to temporarily reroute trail 15 feet west to avoid leaner.
- Area was cleaned up. Log with side bind severed (with 3 feet of springback). All logs bucked, opening temporary bypass.
- Long-term plan: return trail to original route after subsequent winter winds take down leaner.

# Reroute

